

MARATHON PRODUCTS

# c\temp™ Data Logger

## The Single-use Solution

c\temp™ is the revolutionary single-use pre-programmed electronic temperature recorder developed by Marathon Products. Designed for measuring temperatures during the transportation of chemicals, pharmaceuticals and vaccines, the internal thermistor accurately records time and temperatures for user selectable readings in Celsius, Fahrenheit and Kelvin.

Because of its small size, it is suitable for applications where space limitations exist.

The larger format c\tempAA has an extended battery life and can endure rough handling. It is recommended for citrus, produce and dry ice shipments.

The internal firmware provides the following features: time mechanism, start time, intervals, end description for special instructions, alarm values, recording status, measurement data, firmware version, serial and tracking number, model type and after the fact report generation options. User selectable software features also include, language conversion on the fly from English to Spanish, Portuguese, Japanese, French and German.

To start the recorder, simply press the start button!



### Temperature Range

- -29C to +72C (-20F to +160F)
- -40C to +72C (-40F to +160F)
- -81C to +30C (-113F to +86F)

### Temperature Accuracy

- $\pm 0.2^{\circ}\text{C}$  ( $\pm 0.4^{\circ}\text{F}$ ) at  $20^{\circ}$  ( $68^{\circ}\text{F}$ );  $\pm 1.0^{\circ}\text{C}$  ( $\pm 1.8^{\circ}\text{F}$ ) at extremes
- $\pm 0.2^{\circ}\text{C}$  ( $\pm 0.4^{\circ}\text{F}$ ) at  $20^{\circ}$  ( $68^{\circ}\text{F}$ );  $\pm 2.0^{\circ}\text{C}$  ( $\pm 3.6^{\circ}\text{F}$ ) at extremes

### Measurement Intervals

Pre-programmed from 1 minute to 11 minutes depending on model type (duration).

### Operating Models

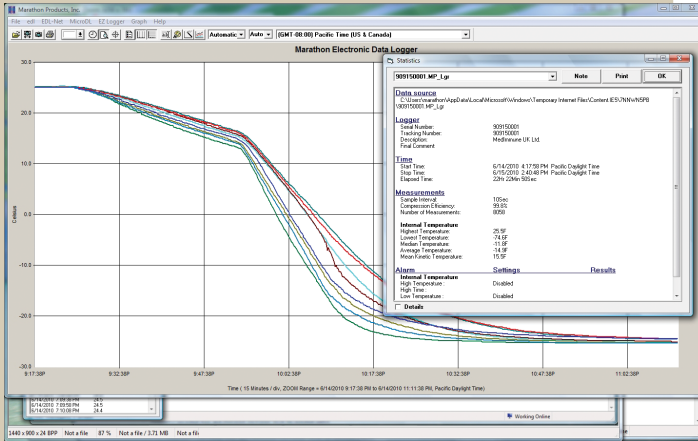
5, 7, 10, 30 and 60 days

MARATHON  
PRODUCTS, INC.



Don't ship without us!®

**MDAS-Pro Software Highlights:** Easy-to-use software provides clear graphs. Report Summary & Statistics File Manager, Note Attachment, Zoom, Elapsed Time or Date/Time View, Recorded View, Celsius, Fahrenheit or Kelvin, Display 3D View option. Data can be exported to other Windows programs such as spreadsheet, word-processing or database. Language support for Chinese, English, French, German, Japanese, and Portuguese. Available for WindowsXP, Vista, 7, 8 and 10. An Enterprise Software version and 21CFR Part 11 Compliant Software are also available.



MDAS-Pro Temperature Plots with Logger General Information

**To Order** (Specify Model Numbers)

Model #	Description
<b>-29C to +72C Range SKU #8011 &amp; SKU #8012 (AA)</b>	
c\temp 7D or c\tempAA 7D	7800 samples 7 days
c\temp 10D or c\tempAA 10D	7800 samples 10 days
c\temp 30D or c\tempAA 30D	7800 samples 30 days
c\temp 60D or c\tempAA 60D	7800 samples 60 days
<b>-40C to +72C Range SKU #8015 &amp; SKU #8016 (AA)</b>	
c\temp 7DSC or c\tempAA 7DSC	7800 samples 7 days
c\temp 10DSC or c\tempAA 10DSC	7800 samples 10 days
c\temp 30DSC or c\tempAA 30DSC	7800 samples 30 days
c\temp 60DSC or c\tempAA 60DSC	7800 samples 60 days
<b>-80C to +30C Range SKU #8014 (AA)</b>	
c\tempAA 5DLT	7800 samples 5 days
c\tempAA 5DLT	7800 samples 10 days
c\tempAA 30DLT	7800 samples 30 days
c\tempAA 60DLT	7800 samples 60 days

## c\temp Specifications

Memory EEPROM, Storage: 8k (approx. 8,000 measurements)

Temperature Range:

c\temp—Red Case	-29C to +72C (-20F to +160F)
c\temp DSC—Gray Case	-40C to +72C (-40F to +160F)
c\tempAA—Red Case	-29C to +72C (-20F to +160F)
c\tempAA DSC—Yellow Case	-40C to +72C (-40F to +160F)
c\tempAA DLT—Blue Case	-80C to +30C (-113F to +86F)

Temperature Accuracy:

Red, Yellow & Gray	±0.2°C at 20°C, ±1.0°C at extremes (±0.4°F at 68°F, ±1.8°F at extremes)
Blue Case	±0.2°C at 20°C, ±2.0°C at extremes (±0.4°F at 68°F, ±3.6°F at extremes)

Measurement Intervals:

Pre-programmed from 1 minute to 11 minutes depending on model type (duration)

Temperature Sensor:

NIST traceable Precision Thermistor

Indicators:

Start/Stop and Alarm

High and low alarm limits:

LED indicator alarm set by temperature and time

Internal Clock Accuracy:

Better than 2 minutes per month

Computer Interface:

Serial Port RS232 Cable, USB Converter

Internal Firmware Provides:

Internal clock, Start time, Interval, User description, Alarm values, Recording status, Measurement data, Firmware version, Serial number, Model type

Power Source:

c\temp models: Lithium Battery (2 Year Shelf Life)  
c\temp AA: Alkaline Battery (2 Year Shelf Life)  
c\temp AA DSC: Alkaline Battery (2 Year Shelf Life)  
c\temp AA DLT: 2- 3.6v Lithium Batteries, IATA — FAA Compliant (1 Year Shelf Life)

Size:

	c\temp	c\tempAA
Length	9 cm (3.54 in.)	12.85 cm (5.06 in.)
Width	5 cm (1.97 in.)	6.73 cm (2.65 in.)
Depth	1.6 cm (0.63 in.)	1.69 cm (0.66 in.)
Weight:	52.5 g (1.85 oz.)	106 g (3.7 oz.)

FAA Compliance

RTCA/D-160 Ver. D, Section 21, Category H.

Quantity:

Minimum 20 units

**Please call 1-510-562-6450**  
for more information or to place an order.

[www.marathonproducts.com](http://www.marathonproducts.com)

14500 Doolittle Drive, San Leandro, CA 94577 ■ [sales@marathonproducts.com](mailto:sales@marathonproducts.com)

Specifications subject to change without prior notice.