

MARATHON PRODUCTS

The EDL-8-WiFi™

Innovative Wireless and Network enabled 8 Channel Data Logger

The most accurate multi-sensor graphical data logger on the market. The EDL-8 WiFi has eight channels with three types of NIST-traceable interchangeable sensors. Each sensor is calibrated for both temperature and humidity by the sensor manufacturer.

- Temperature Sensor: RTD -200°C to +380°C, accuracy $\pm 0.2^\circ\text{C}$ at center.
- Relative Humidity Sensor: Capacitive humidity readings 0% RH to 100% RH.
- CO₂ Sensor: Designed to measure percentage of carbon dioxide up to 30%. It is useful for biological or scientific applications where high levels of CO₂ must be maintained in an enclosed apparatus.

Ethernet and WiFi capability

EDL-8 WiFi can be monitored remotely via Ethernet connectivity or via a WiFi network. The device also connects directly to the computer via a USB port.

Statistics and mathematical functions

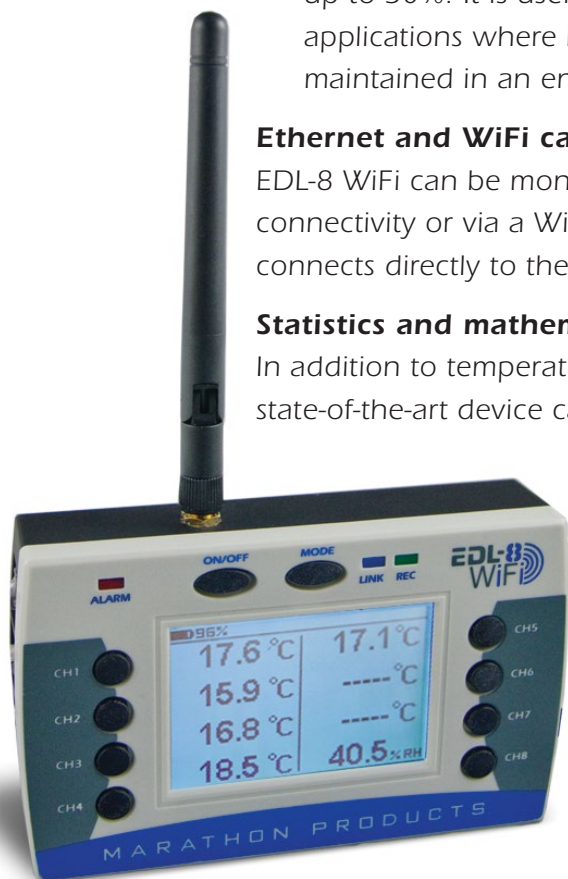
In addition to temperature, humidity and CO₂ levels, the compact state-of-the-art device calculates minimum- maximum-time over alarm conditions and much more. Simply push the mode button and the channel selection.

Alarms and battery backup

Alarm settings can be set up quickly in the Maxi-Thermal WiFi software based on temperature, RH, and level of CO₂. Alarms are visual (flashing display) and red LED (flashing). Likewise, alarm settings can be set up to trigger email notifications. In the event of a power outage, the internal lithium ion battery (when fully charged and when the backlight is not on) will continue to record

HIGHLIGHTS:

- Temperature Sensor: RTD -200°C to +380°C
- Relative Humidity Sensor: 0% to 100% RH
- CO₂ Sensors
- 64k memory storage per channel
- Precision data capture
- Alert notifications by email, phone, pager or SMS
- Battery backup
- Custom long-range probes up to 30 meters



MARATHON
PRODUCTS, INC.



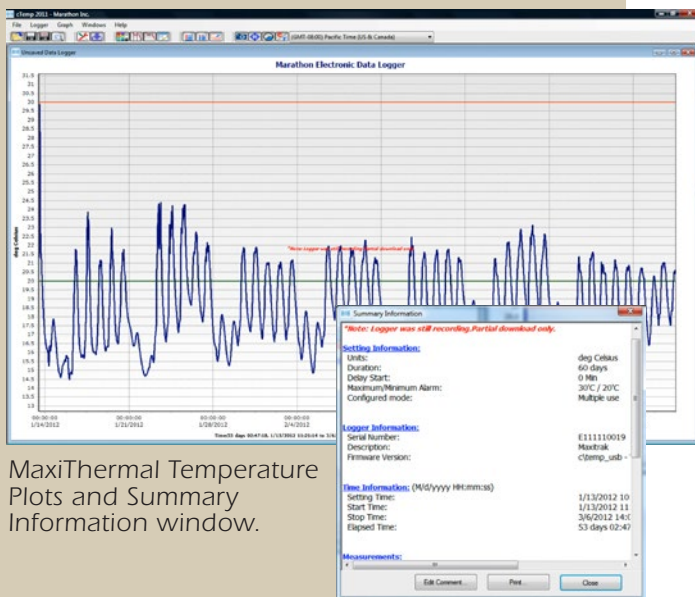
Don't ship without us!®

data for approximately 24 hours.

Large, easy-to-read display

Now view data remotely for all your locations from your desk. The EDL-8 WiFi is the ideal instrument for documenting, controlling, and managing critical environmental conditions graphically, statistically and in real time. Up to sixteen different display set-ups can be stored and recalled at the touch of a single button. You can easily modify this to get exactly what you want. View high/low data and all alarm conditions in real time from the Dashboard for all your

MaxiThermal Software Highlights: Easy-to-use software provides clear graphs. Report Summary & Statistics File Manager, Note Attachment, Zoom, Elapsed Time or Date/Time View, Recorded View, Celsius or Fahrenheit. Data can be exported to other Windows programs such as spreadsheets, word-processing or databases. Available for Windows 98, NT, 2000, ME, XP, Vista, 7 and 8. An Enterprise Software version and 21CFR Part 11 Compliant Software are available.



MaxiThermal Temperature Plots and Summary Information window.

EDL-8-WiFi Specifications

| | |
|-----------------------------|--|
| Memory: | 64k per channel, 1MB flash memory for data storage |
| Microcontroller: | 32 bit flash microcontroller cortex M3 |
| Digital sensor options: | Temperature, Humidity, CO ₂ , pH |
| Temperature Range: | -200°C to +380°C / -328°F to +716°F |
| Temperature Accuracy: | ±0.2°C at center, 2.0°C at extremes / ±0.36°F at center, 3.6°F at extremes |
| Temperature Resolution: | 0.1°C / .18°F |
| Humidity: | ±2% to 70% RH |
| CO ₂ : | Up to 30% |
| Recording Rate (sec.): | Set by user |
| Update Data Rate (records): | Set by user |
| Alarm Programming: | High and low alarm limits set by temperature, humidity, CO ₂ and time |
| Alarm Modes: | Visual (flashing display) and red LED: |
| Alarm Notifications: | Alert notification to e-mail, phone, pager and SMS |
| Interface: | RJ9 interface for 5 RTD sensors, Mini USB-B 12C interface for 3 probes |
| Communication: | USB 2.0 with mini USB-B connector Ethernet IEEE 1588 with protected RJ-45 WiFi ethernet (optional) |
| Power Source: | 110 AC adaptor Li-polymer 3.6V-2Ah battery for data logging function. Battery backup—Failsafe prevents data loss. |
| PC software: | MaxiThermal WiFi |
| Accessories: | Optional cable probes up to 30 meters. |
| Physical Properties | |
| Operating range: | 0°C to 50°C, |
| Storage range: | -20°C to +85°C |
| Display: | Graphic dot matrix LCD 128x86 |
| Viewing area: | 60 x 40 mm |
| Width | 12.5 cm / 4.9 in. |
| Height | 7.29 cm / 2.87 in. |
| Depth | 2.95 cm / 1.16 in. |
| Weight: | 230 grams / 8.1 oz. |

For information on the EDL-8-WiFi and MaxiThermal software please contact Marathon Products.

Please call 1-510-562-6450
for more information or to place an order.

www.marathonproducts.com

627 McCormick St., San Leandro, CA 94577 ■ sales@marathonproducts.com
Specifications subject to change without prior notice.