

MARATHON PRODUCTS

EDL-M5™

Rugged Remote Temperature Management for Facilities, Warehouses, Trucking, and Exterior Sites “Wireless Sensor Connectivity”

The EDL-M5 has a powerful 2-way 900MHz radio for long range wireless connectivity and is ideal for remotely monitoring multiple buildings, trucks, warehouses and sites simultaneously. With expanded individual sensor memory and back-up batteries the EDL-M5 protects against any data loss caused by a network interruption, computer malfunction or other system failure. This makes the EDL-M5 the most durable, reliable, and robust wireless temperature logger on the market today. With 256-bit AES Encryption the EDL-M5 can be securely accessed at anytime from anywhere over a local network or via the internet.

In the lab, our NIST-calibrated and traceable thermistor probes have been tested sterile and can be used in most clean environments. EDL-M5 is perfect for quality assurance and quality control, for monitoring low temperature facilities, storage, warehouses, and trucking via state-of-the-art high performance temperature sensors and data logging.

The EDL-M5 is an ideal tool for reliably collecting, recording and storing temperature measurement data in real time, documenting standards compliance, and as proof for certification.



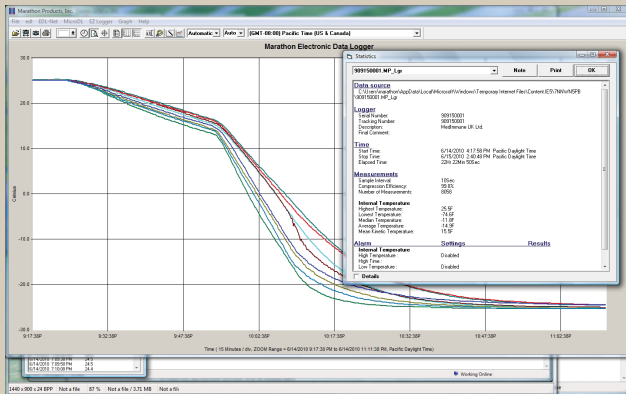
BENEFITS:

- Alarm notifications via cell email, phone, SMS or pager
- Multiple Alarm options: local and remote
- Interchangeable sensors: -80° C to 72° C
- Precision temperature data capture
- Powerful software with real time display
- Audit Trails for Regulatory Control
- 8K to 64K EEPROM memory options
- Power outage detection capabilities

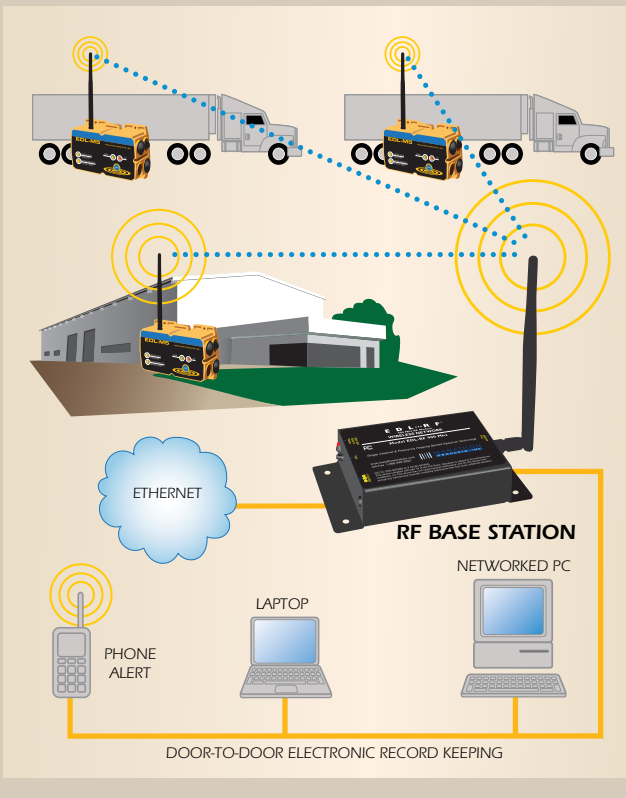
MARATHON
PRODUCTS, INC.

Don't ship without us!®

MDAS-Pro Software Highlights: Easy-to-use software provides clear graphs. Report Summary & Statistics File Manager, Note Attachment, Zoom, Elapsed Time or Date/Time View, Recorded View, Celsius, Fahrenheit or Kelvin, Display 3D View option. Data can be exported to other Windows programs such as spreadsheet, word-processing or database. Language support for Chinese, English, French, German, Japanese, and Portuguese. Available for WindowsXP, Vista, 7, 8 and 10. An Enterprise Software version and 21CFR Part 11 Compliant Software are also available.



For FDA, GxP, JCAHO, CAP, HFAP, CARF, CHAP, ACHC, URAC, HQAA, AABB and Regulatory Compliance



EDL-M5 Specifications

- EEPROM Memory: 8k to 64k (approx. 8,000 to 64,000 measurements)
- Temperature Range: SKU #8081: -40° C to 72° C / -40° F to 160° F
SKU #8082: -80° C to 30° C / -112° F to 86° F
- Range: Up to 2000' indoor/urban range
Outdoor RF line of sight range with high gain antenna 1 mile (1.6 km)
- Temperature Accuracy: ±0.5° C at extremes ±0.2° C at center
- Temperature Sensor: NIST traceable precision thermistor
- Indicators: Battery Check, System Connected, Alarm, On
 - Start: Push button and remote start via software
 - Alarm: High/low alarm limits set by temperature and time limits
- Alarm Modes: Continuous or cumulative with LED indicators
- User notifications: Alarm conditions on screen via email and cell phone
- Power Source: 4 D cells alkaline, IATA – FAA Compliant
Battery backup failsafe prevents data loss.
- Accessories: Optional probes, external battery connectors to outside power supply, adaptor to AC outlets, external relays for greater distance, Ethernet connectors.
- Logger size: 6.32" width x 4.88" height x 2.89" deep
16.05 cm width x 12.40 cm height x 7.34 cm deep
- Weight: 2 lbs 8.6 ounces (1.27 kilograms) with 4 D cells
- FAA Compliance: RTCA/D-160 Ver. D, Section 21, Category H.



Please call 1-510-562-6450
for more information or to place an order.

www.marathonproducts.com

14500 Doolittle Drive, San Leandro, CA 94577 ▪ sales@marathonproducts.com
Specifications subject to change without prior notice.