

MARATHON PRODUCTS

edl™ Data Logger

Get the facts!

These multi-use data loggers are perfect for monitoring temperatures down to -40C (-40F) without a probe. Both units use thermistor technology and share the same basic palm-sized design so it's perfect where space limitations exist.

The edl is our top of the line data logger with 32k memory, 0.1C accuracy and resolution. This is a must have device if you work in a laboratory or metrology department.

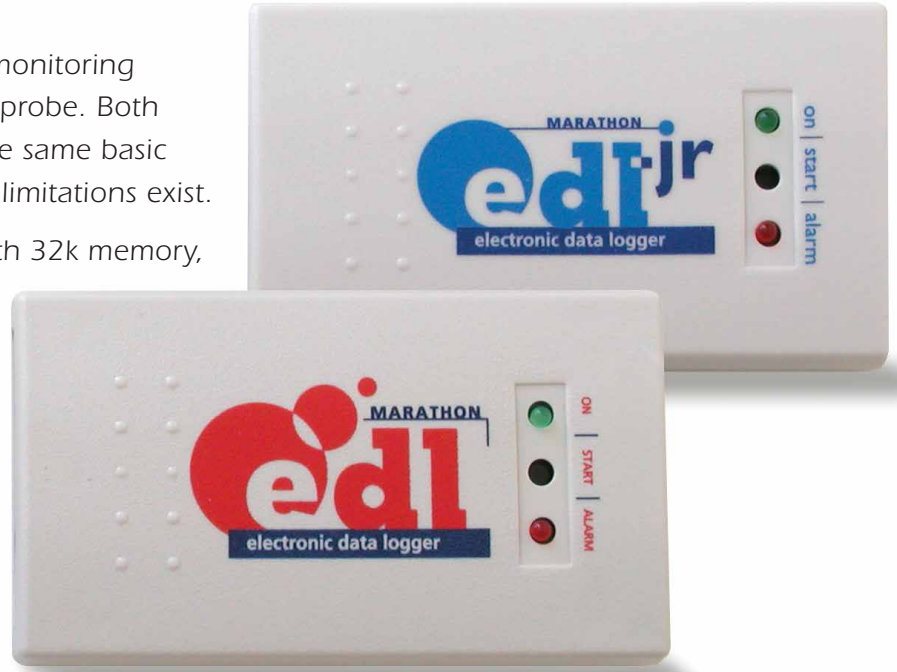
The edl-jr is the work horse of our product line with a full 8k memory and the ability to measure down to -40C. A favorite in the pharmaceutical and transportation industries.

Functions include: start, stop, elapsed time as well as customizable time intervals.

Also available: user descriptions for initialization and for downloading the data; high and low alarm values, recording status, real time measurement display and more. View up to sixteen temperature profiles at a time; download data without stopping the original program; attach probes or an audio alarm; all with precision accuracy of $\pm 0.1^\circ\text{C}$ at center of range and traceable to NIST standards.

Visual Alarms: All our data loggers have the ability to program alarm limits. Should the temperature reach levels outside these limits, the onboard red LED will light until reset by the user.

Computer Ready: Marathon's easy-to-use MDAS-Pro software is available for Microsoft Windows XP, Vista, 7, 8 and 10. Our proprietary IC-9P serial cable is needed to download temperature information to a computer.



Temperature Range

-40°C to +72°C

-40°F to +160°F

Temperature Accuracy

(NIST traceable)

$\pm 0.1^\circ\text{C}$ at center of range

$\pm 0.3^\circ\text{C}$ at extremes

Measurement intervals

2 seconds to months

Memory

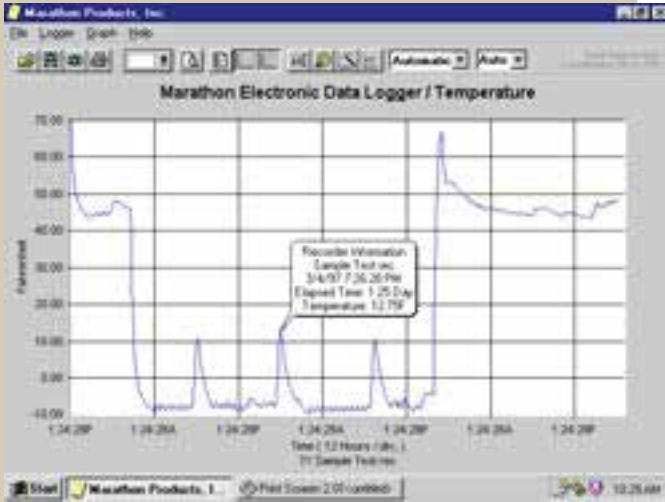
32k

MARATHON
PRODUCTS, INC.



Don't ship without us!®

MDAS-Pro Software Highlights: Easy-to-use software provides clear graphs. Report Summary & Statistics File Manager, Note Attachment, Zoom, Elapsed Time or Date/Time View, Recorded View, Celsius, Fahrenheit or Kelvin, Display 3D View option. Data can be exported to other Windows programs such as spreadsheet, word-processing or database. Language support for Chinese, English, French, German, Japanese, and Portuguese. Available for Windows XP, Vista, 7, 8 and 10. An Enterprise Software version and 21CFR Part 11 Compliant Software are also available.



To Order

- SKU #8020 edl-32k Temp. data logger, 32k memory
- SKU #8022 edl-jr Temp. data logger, 8k memory
- MDAS-Pro Marathon software history analysis program
- IC-9P Serial cable-9 pin serial connection cable with 25 pin/9 pin adaptor

Accessories/Options

- | Model # | Description |
|----------|--|
| SP16 | External Probe: 16cm in length; 3.0mm in diameter; 1.8m cable |
| SP28 | External Probe: 28cm in length; 3.0mm in diameter; 1.8m cable |
| MP8 | External Probe: 8cm in length; 1.83mm in diameter; 1.8m cable |
| MP20 | External Probe: 20cm in length; 1.83mm in diameter; 1.8m cable |
| MP Alarm | External Audio Alarm, powered by 4 AA Batteries |

edl Specifications

- Memory EEPROM, Storage: edl: 32k (approx. 32,000 measurements)
edl-Jr: 8k (approx. 8,000 measurements)
- Temperature Range:
 - High +72°C / +162°F / 345.2°K
 - Low -40°C / -40°F / 233.2°K
- Temperature Accuracy: ± 0.5°C at 0°C to 20°C, ±1.0°C at extremes
±0.9°F at x°F to 68°F, 1.8°F at extremes
- Measurement Interval: Programmable from 2 seconds to months
- Temperature Sensor: NIST-traceable Precision Thermistor
- High and Low Alarm Limits: LED indicator set by temperature and time
- Internal Clock Accuracy: Better than 2 minutes per month
- Indicators: Power and Alarm
- Computer Interface: Serial Port RS232 Cable, USB Converter
- Internal Firmware Provides: Start and End time, Interval, User description, Alarm values, Recording status, Measurement data, Language selection, Temperature scale, Start delay.
- Power Source: One 3.6 Volt Lithium Battery 2 Year Shelf Life
- Size:
 - Inches 3.54(L) x 1.97(W) x .63(H)
 - Centimeters 9(L) x 5 (W) x 1.6(H)
 - Weight 1.85 oz./52.5 g.

Please call 1-510-562-6450
for more information or to place an order.

www.marathonproducts.com

14500 Doolittle Drive, San Leandro, CA 94577 ▪ sales@marathonproducts.com
Specifications subject to change without prior notice.