

# MARATHON PRODUCTS, INC.



MaxiThermal  
8-Channel WiFi



The 8 Channel WiFi logger can connect to your network by either 802.11g WiFi or by standard 10/100 network cable.

## Programming the 8-Channel WiFi logger to connect to a WiFi Network.

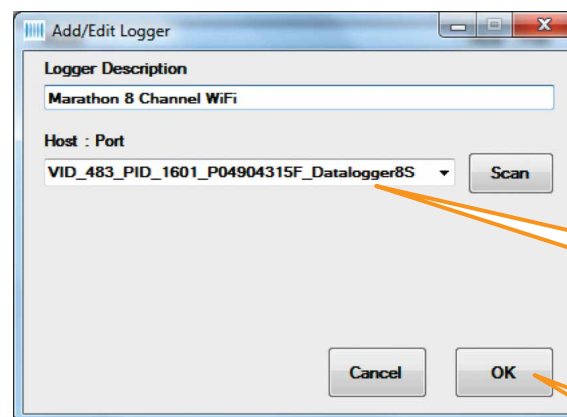
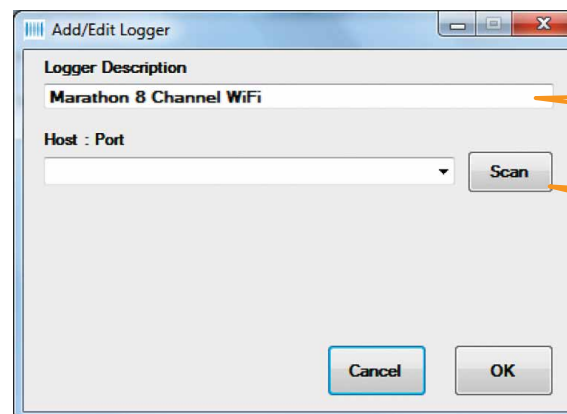
### STEP 1:

Install MaxiThermal WiFi software on your PC using the Autorun.exe file.

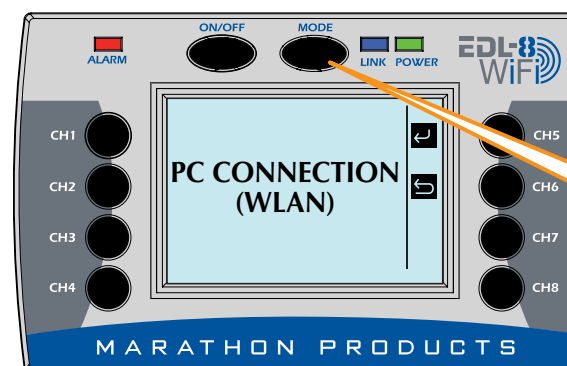
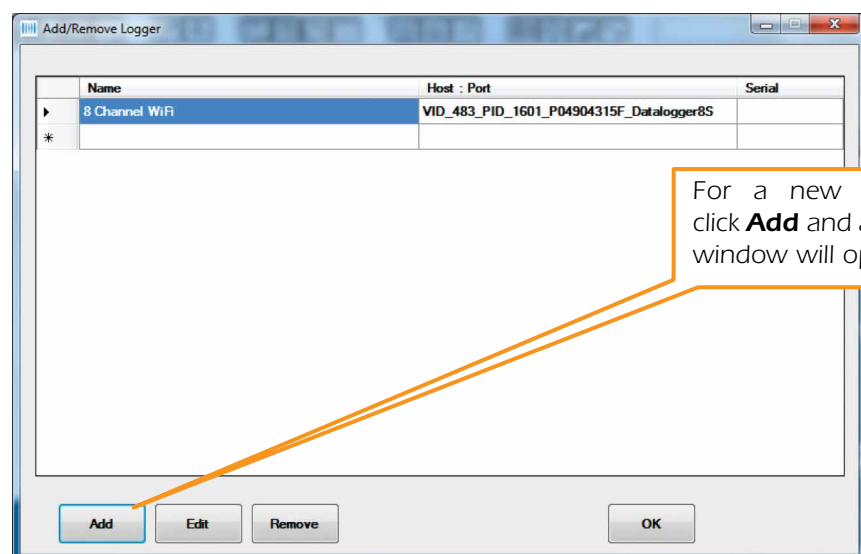
The installation should include automatic installation of the USB Socket Utility.

Connect the 8-Channel WiFi logger to your PC with the USB cable.

In the Menu Bar click **Logger / Admin / Add/Remove Logger**



Disconnect the USB cable from the logger.



### STEP 2:



Push **CH 5** to select.



Push **CH 5** to turn **ON** WLAN connection.

The logger will search for a WiFi network to connect to.



When the logger connects to the WiFi network it will display its IP address.

Make a note of the IP address assigned by your network's DHCP server.

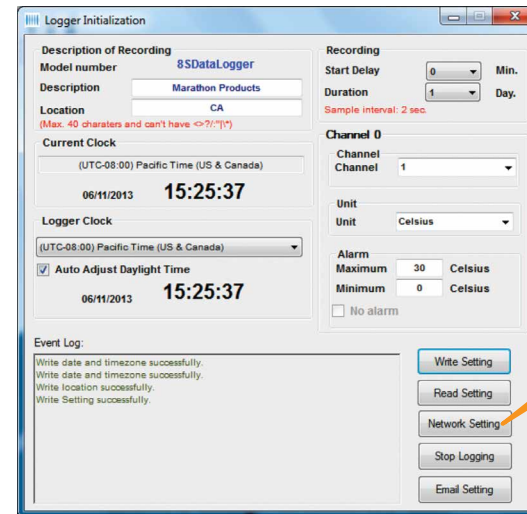
\_\_\_\_\_ ■ \_\_\_\_\_ ■ \_\_\_\_\_ ■ \_\_\_\_\_

## STEP 3:

Now that the logger has been assigned an IP address, you need to set up the WiFi connection in the software so it can communicate with the logger.

Reconnect the USB cable to the logger.

On the Menu Bar select **Logger / 8 Channel WiFi / Logger Initialization**



Click on **Network Setting**.

Network name (SSID):

Security type: Open

Network key:

Mac: 00bd:3b:33:05:71

DHCP: ☒

IP: 192.168.0.10

Netmask: 255.255.255.0

Gateway: 192.168.0.2

Setting wifi

read

Enter your WiFi network's SSID name

Network name (SSID):

Security type: Open

Network key:

Mac: 00bd:3b:33:05:71

DHCP: ☒

IP: 192.168.0.10

Netmask: 255.255.255.0

Gateway: 192.168.0.2

Setting wifi

read

Select **WPA2** for Security Type (If your network uses a different security type select that type).

Network name (SSID):

Security type: Open

Network key: 445b926b99

Mac: 00bd:3b:33:05:71

DHCP: ☒

IP: 192.168.0.10

Netmask: 255.255.255.0

Gateway: 192.168.0.2

Setting wifi

read

Enter your WiFi network's Password.

Click **Setting WiFi** to write the settings to the logger.

Disconnect the USB cable from the logger.

## STEP 4:

In the Menu Bar click **Logger / Admin / Add/Remove Logger**



A window will open which will list the USB logger name you entered earlier. Here you will need to add the new WiFi logger defined in the previous step.

Name	Host : Port	Serial
8 Channel WiFi	VID_483_PID_1601_P04904315F_Datalogger8S	

Add Edit Remove OK

For a new logger click **Add** and a blank window will open.



**Add/Edit Logger**

Logger Description  
Marathon 8 Channel WiFi

Host : Port

Scan

Cancel OK

Enter a name for the new logger connected by WiFi.

Click **Scan** to search for the IP address.

This will display the logger information in the window.

**Add/Edit Logger**

Logger Description  
Marathon 8 Channel WiFi

Host : Port  
192.168.1.58

Scan

Cancel OK

Click the “**Drop-Down**” arrow to see the IP address of logger. Click on the **IP address**.

Click **OK** to close the windows.

The logger should be connected to the WiFi network and ready for use.

## Software Highlights

### INITIALIZATION

On the Menu Bar select **Logger / 8 Channel WiFi / Logger Initialization**



This will open a new window to program the logger's 8 channels.

**Logger Initialization**

**Logger Name**  
Description of Recording: 8SDataLogger

**Location**  
Description: Marathon Products  
Location: CA  
Current Clock: (UTC-08:00) Pacific Time (US & Canada)  
06/11/2013 15:25:37

**Time Zone**  
Logger Clock: (UTC-08:00) Pacific Time (US & Canada)

**Daylight Savings**  
☒ Auto Adjust Daylight Time  
06/11/2013 15:25:37

**Recording**  
Start Delay: 0 Min.  
Duration: 1 Day.  
Sample Interval: 2 sec.

**Channel 0**  
Channel Selected: 1

**Channel Units**  
Unit: Celsius

**Channel Alarm Limit**  
Alarm Maximum: 30 Celsius  
Minimum: 0 Celsius  
☐ No alarm

**Write to Loggers**  
Event Log:  
Write date and timezone successfully.  
Write date and timezone successfully.  
Write location successfully.  
Write Setting successfully.

Write Setting  
Read Setting  
Network Setting  
Stop Logging  
Email Setting

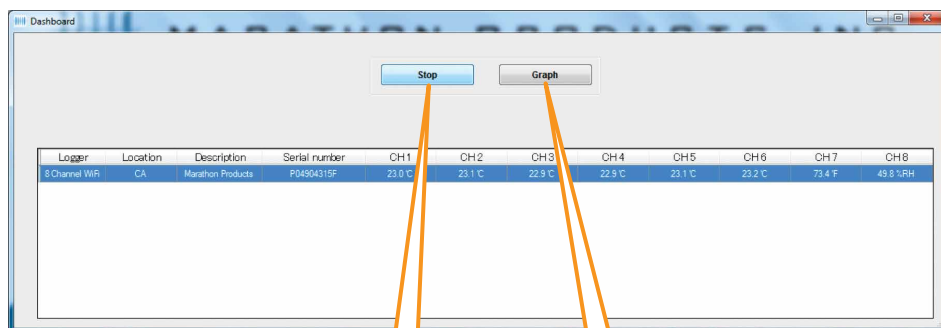
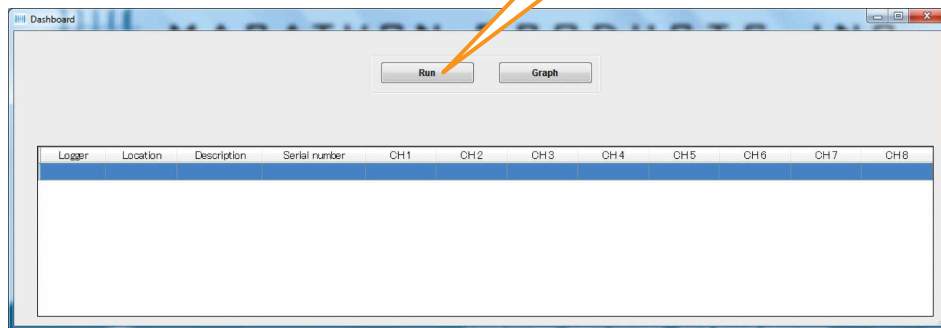
- In the upper left **Description of Recording** area:  
Enter a meaningful Description and Location information.  
Select your Time Zone from the drop-down menu.  
Check the Adjust Daylight Savings Time if you need the adjustment.
- In the upper right **Recording** area:  
Select the **Start Delay** – the number of minutes to wait before the logger starts recording. This can be left at 0.  
Select **Duration** of recording time – this the total amount of time the logger will record before stopping. The measurement interval is displayed in red next to the setting.
- Select **Time Zone** from drop down menu. Check/uncheck box for **Auto Adjust Daylight Time**.
- In the center right **Channel, Unit & Alarm** area:
  - Select the channel to program from the drop-down menu.
  - Select the units – F or C for the measurements.
  - Enter a High Alarm Temperature and a Low Alarm Temperature for the channel being programmed.
- Repeat steps 4 a. b. & c. for each channel being used.
- Click **Write Setting**. If there is data in the logger's memory you will have to Erase Logger before clicking **Write Setting**.
- Your logger is ready to start recording.

## DASHBOARD

Click on **Dashboard** for Real Time Channel Information



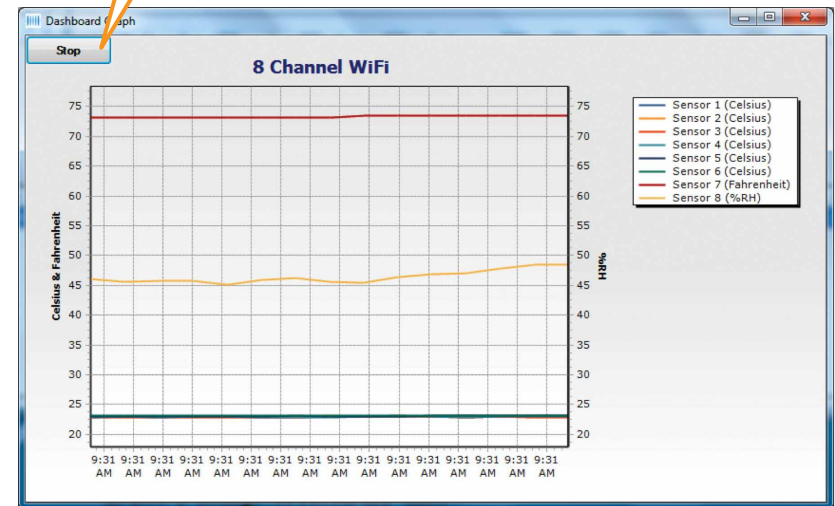
Click **Run** to start Real Time Display.



Click **Stop** to stop Real Time Display

Click **Graph** to start Real Time Graphing.

Click **Stop** to stop Real Time Graphing.



## EMAIL SETTINGS

Set up **Alarm Notification** by email or text message. Open the **Logger Initialization** window (see previous page) and click on **Email setting**.

Check **Enable Alarm** for Alarm Notification by email or text message.

Enter the email account information.

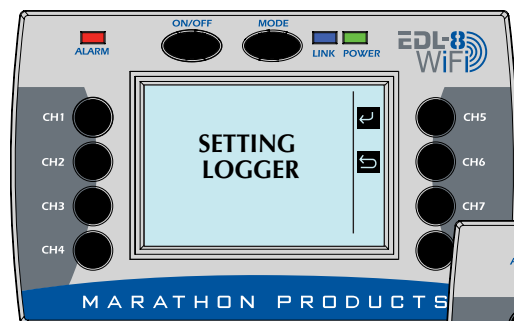
Enter the Email Server IP address and other information for System Emails.

Click **Save**

Check **Show Password** to confirm your password

## 8-Channel WiFi Logger Settings Highlights

### Start, Stop and Clear Data on Logger:



In main screen, press **MENU** button to choose **SETTING LOGGER**.

Press button **CH5** to enter

Press button **CH5** to **Clear**, **Start** or **Stop** the logger.



**START** recording.



**STOP** recording.



**CLEARING** data



### Change Backlight of the Logger:



Press **MENU** button to choose **SETTING BACKLIGHT**

**SETTING BACKLIGHT**

Press button **CH5**.

Backlight is off.

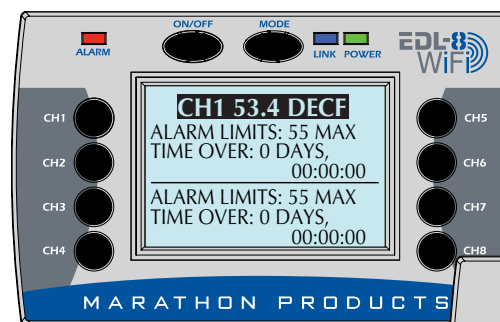


Press button **CH5** to turn backlight on or off, press button **CH6** to return

Backlight is on



### View Channel Information:



In main screen, press button **CH1** to view information of channel 1, button **CH2** to view information of channel 2, etc.

Information about logger unit.



## Programming the 8-Channel WiFi logger to connect to a LAN Network.

### STEP 1:

Install MaxiThermal WiFi software on your PC using the Autorun.exe file.

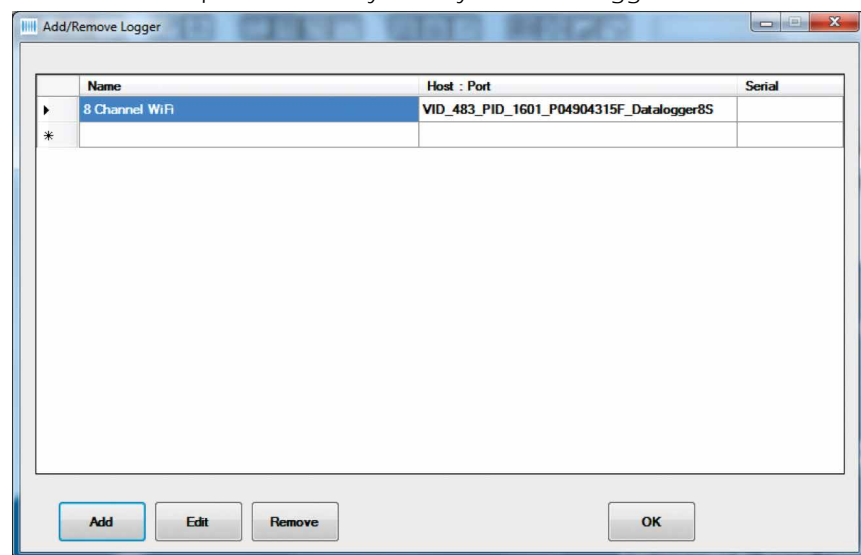
The installation should include automatic installation of the USB Socket Utility.

Connect the 8-Channel WiFi logger to your PC with the USB cable.

In the Menu Bar click  
**Logger / Admin /  
Add/Remove Logger**

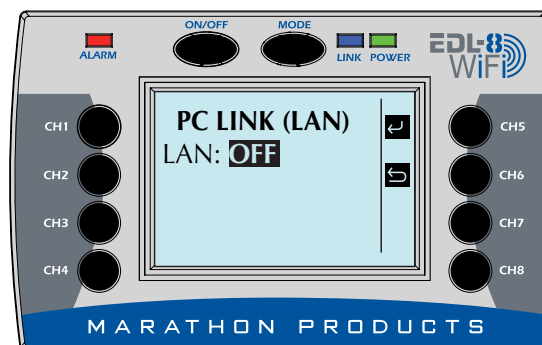
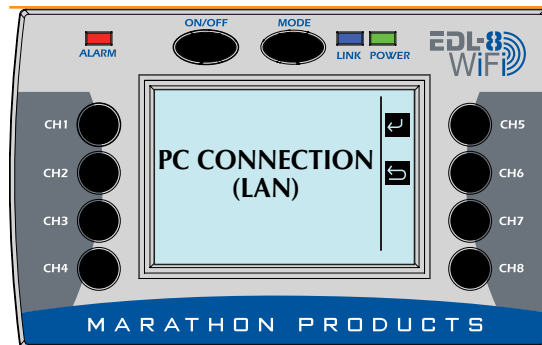


A window will open which may or may not have loggers listed.

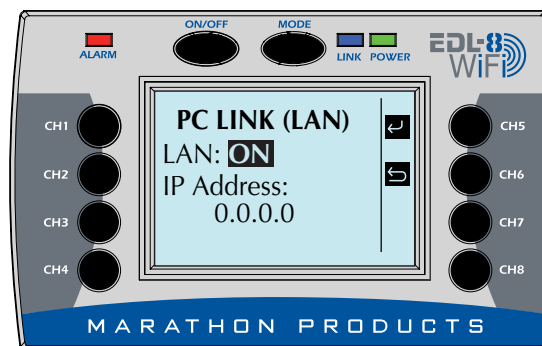


### STEP 2:

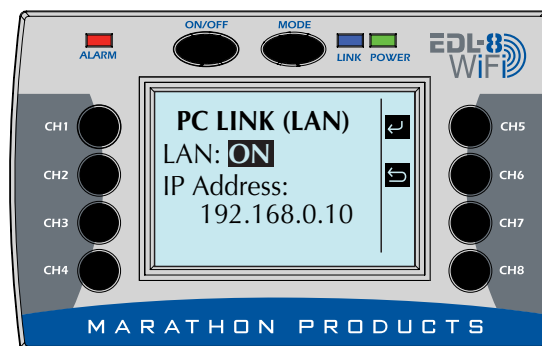
On the 8 Channel Logger push the **MODE** button multiple times until LAN is displayed.



Push **CH 5** to select.



Push **CH 5** to turn **ON** LAN connection.



Logger will connect to network to get assigned IP address

Logger will display its IP address.