

MARATHON PRODUCTS, INC.



MaxiLog Data Logger

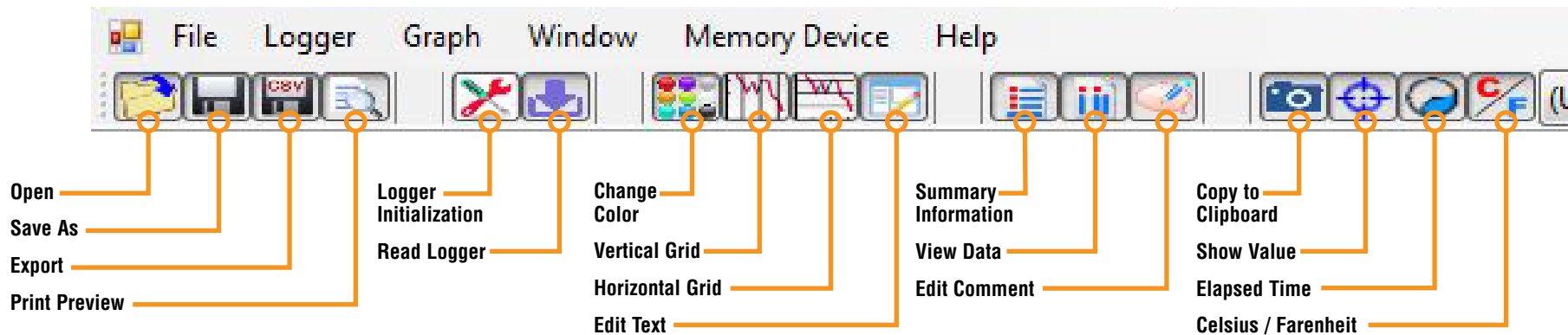
Install the MaxiThermal Software

You need to **“Run As Administrator”** when you install the MaxiThermal Software. There are 2 programs on the software CD that need to be installed:

MaxiThermal Software and GPSThroughService

Make sure that you have installed both programs before running MaxiThermal.

Understanding the Menu Bar

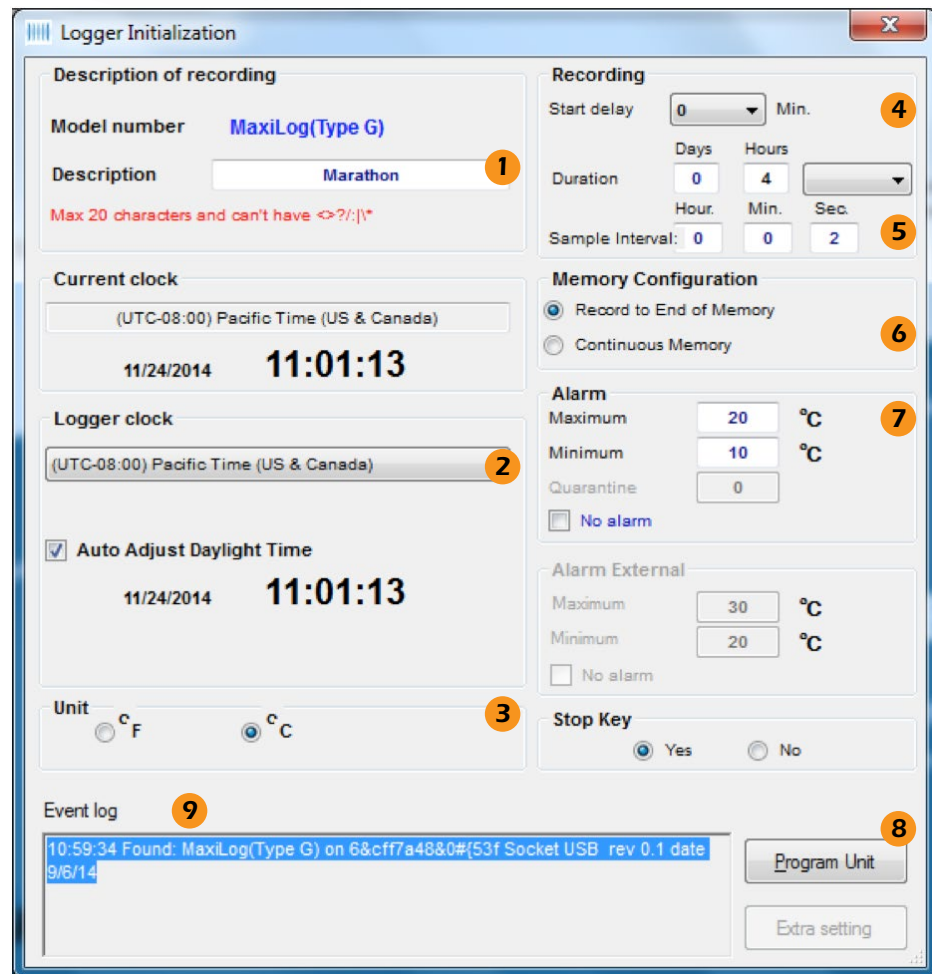
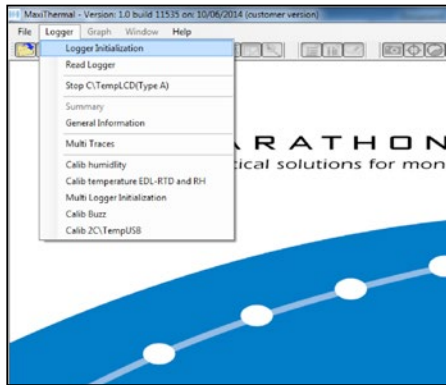


Q U I C K S T A R T G U I D E

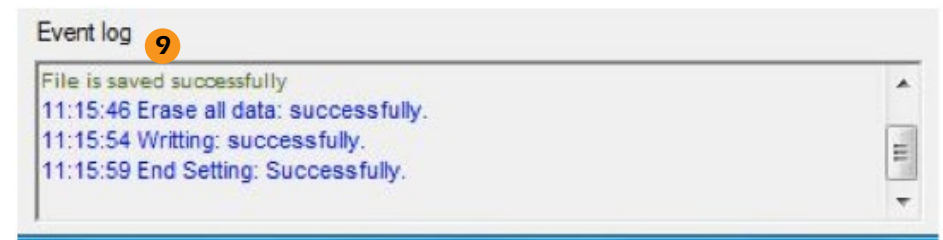
Programming The Logger

Begin by starting the MaxiThermal software. Put the MaxiLog data logger into the cradle and connect it to the PC with the USB cable.

On the menu bar select **Logger / Logger Initialization** in the drop-down menu. The **Logger Initialization Window** will open.



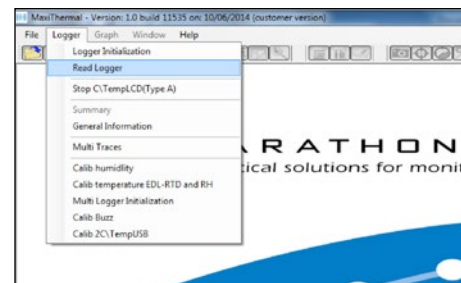
1. Enter a **Description**
2. Select the **Time Zone**
3. Select the temperature **Units**. Centigrade or Farenheit.
4. Select the **Start Delay** time – IF YOU WANT A START DELAY.
5. Select or enter the **Duration** of Recording time – this will automatically calculate the **Sample interval**.
6. Select the **Memory Configuration**.
7. Select **“No Alarm”** or enter **Maximum** and **Minimum** temperature values for High & Low Alarms.
8. Click **Program Unit** to write the new configuration to the logger.
9. The MaxiLog **Event Log** will show all logger interactions. It will show that writing the new configuration was successful.



Remove the logger from the USB cradle.

Push and hold the **START** button to begin logging. Be sure to release the **START** button as soon as the display shows.

Reading The Logger

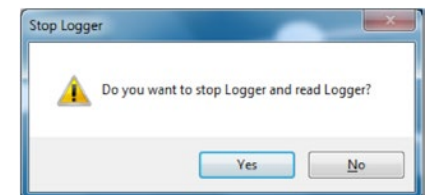


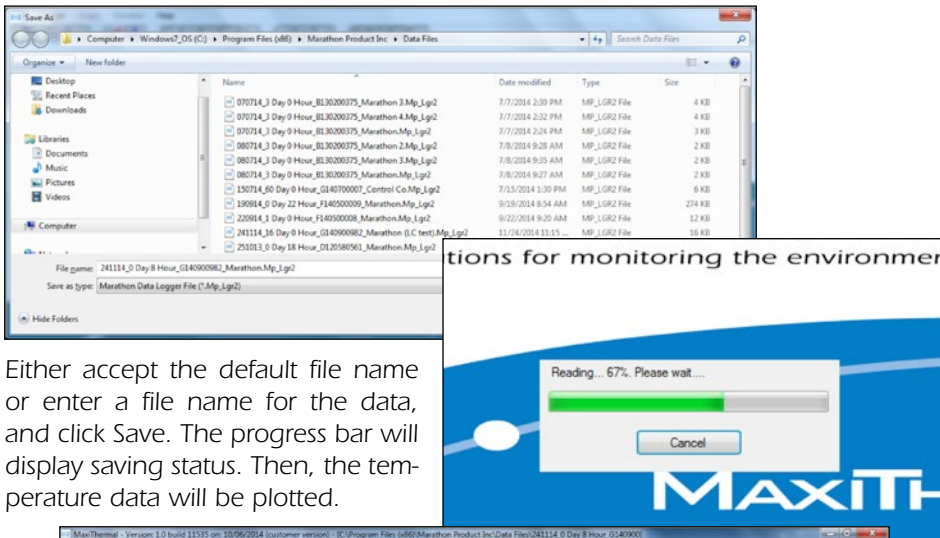
Begin by starting the MaxiThermal software. Put the MaxiLog data logger into the cradle and connect it to the PC with the USB cable.

■ On the menu bar select **Logger / Read Logger** in the drop-down menu.

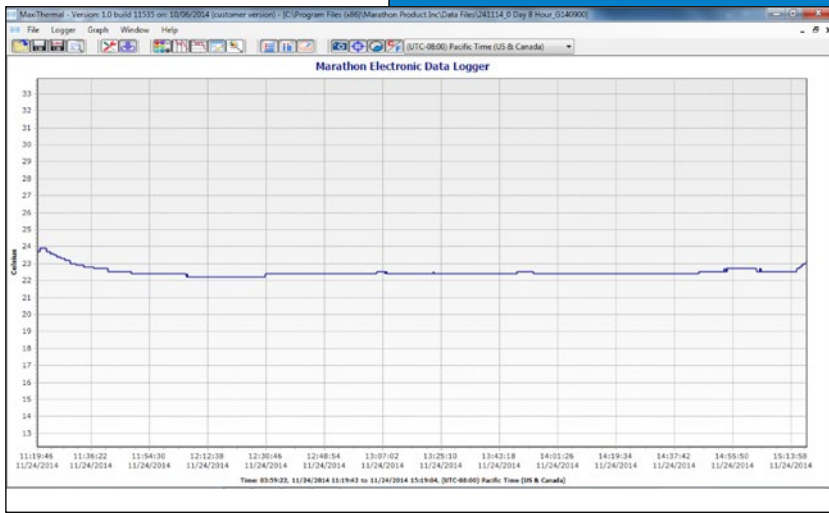
If the logger is currently recording you will be asked if you want to stop the logger recording and read it.

Selecting **Yes** will stop the logger, read the memory, and open a pop-up window to save the data.





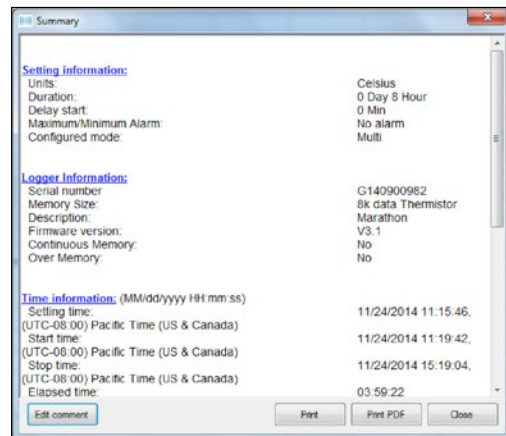
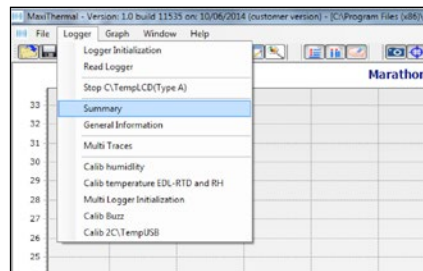
Either accept the default file name or enter a file name for the data, and click Save. The progress bar will display saving status. Then, the temperature data will be plotted.



Creating Reports

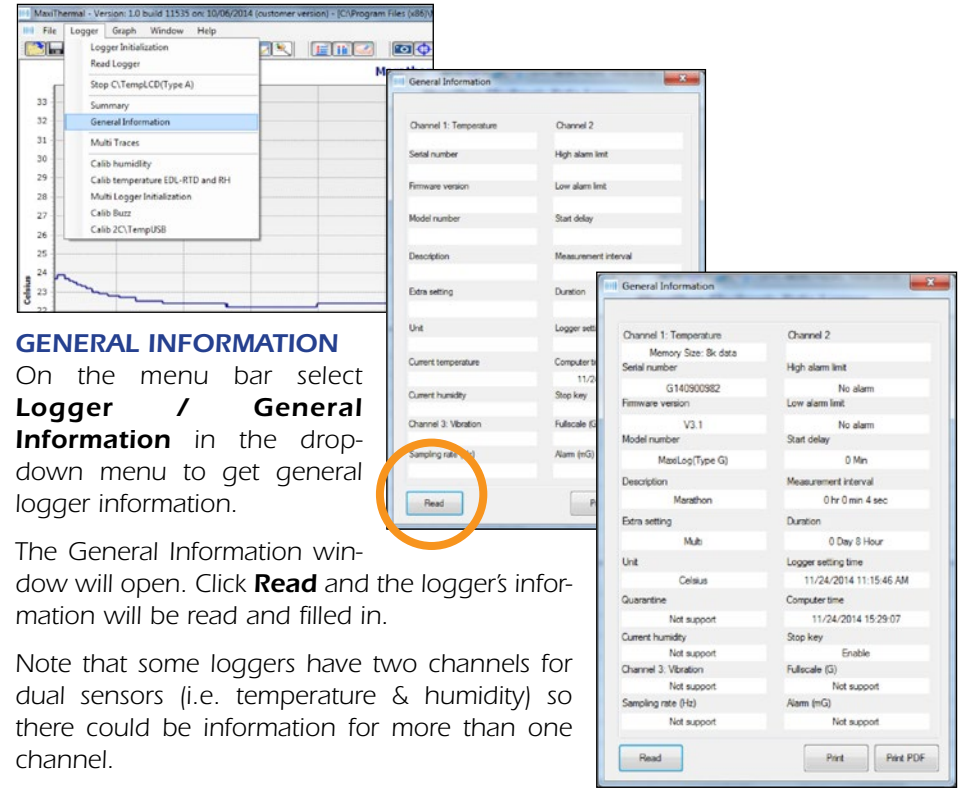
SUMMARY INFORMATION

On the menu bar select **Logger / Summary Information** in the



drop-down menu to get a summary report of the data session.

The Summary Information window will open and you can scroll through the logger information.



GENERAL INFORMATION

On the menu bar select **Logger / General Information** in the drop-down menu to get general logger information.

The General Information window will open. Click **Read** and the logger's information will be read and filled in.

Note that some loggers have two channels for dual sensors (i.e. temperature & humidity) so there could be information for more than one channel.

ADDITIONAL OPTIONS

Under the **File Menu**, users can perform the following functions.

File/Export Data. Export a CSV format file for use in Excel.

File/Print/... Print options: **Summary, Graph, Graph and Summary, Data and Summary, Data and Graph.**

