



## EDL-WiFi

Plug the EDL-WiFi into a USB port on your PC.

Run **Find USB** routine to scan for USB hardware.  
Go to the **USB Tab**.

Select the edl-WiFi device you want to add to the WiFi network.  
This shows options and values to change.

- Device IP Address
- Device Port Number

Click **Save**.

To add the EDL-WiFi to your network, run **Scan Net** routine.  
Select the EDL-WiFi device to add.

Enter the **Password**

Click **Connect**.

The EDL-WiFi should be connected to your WiFi network.

Marathon Products Inc. EDL Net Parameter - Mozilla Firefox

File Edit View History Bookmarks Tools Help

http://192.168.0.190/

Most Visited Getting Started Latest Headlines Yahoo!

Yahoo! Marathon Products Inc. EDL Net P...

**MARATHON**  
PRODUCTS, INC.

A. The current Logger settings are displayed. Enter new settings and click on **Change**

When you are finished, **CLICK TO REBOOT** button at the bottom of the page

192.168.0.190  Enter new Logger IP Address

255.255.255.0  Enter new Logger Subnet Address

10001  Enter new Logger Port Address

B. The current Host settings are displayed. Enter new settings and click on **Change**

192.168.168.110:49999  Enter new HOST IP Address and Port Address

192.168.0.1  Enter new Logger Gateway IP Address (optional)

C. [Click to Reboot](#)

**Glossary**

1. **Logger IP Address** - usually assigned by the network DHCP server
2. **Subnet Address** - usually assigned by the network DHCP server
3. **Port Address** - assigned by Marathon; required
4. **Host IP Address and Port Address** - required if using the **Alarm Monitor** program. This is the location of the computer receiving the alarms from the logger and sending email, cell phone alarm messages to recipients
5. **Host Gateway IP Address** - required if using the **Alarm Monitor** program. This is the location of the computer outside the network receiving the alarms from the logger and sending email, cell phone alarm messages to recipients

Done

If you want to you can change the address to a new address that will not be changed by the DHCP server. This should be done with the help of your IT department. If you change the address, or other information in A, click on **Change** and click on C. Click on **Click to Reboot** to reboot the logger.

Before leaving this form make a note of the **“Logger Port Address”** this will be used later.

For the Alarm Monitor to work the logger needs to know where to send the alarm message. The Alarm Monitor software should be run on a computer that is on 24 hours a day. The IP address of that computer running the Alarm Monitor software is entered as the “Host IP Address” on the form. Note that on the form the entry is represented as Address:Port. The default port is 49999.

Also be aware that the computer running the Alarm Monitor program may have a firewall also running. This firewall will probably block messages coming in on port 49999. You will need to modify the firewall settings so that messages coming in on port 49999 go to the Alarm Monitor.

Close the browser window.

## MDAS-Pro Software Installation


MDAS-Pro software runs on Microsoft Windows XP and Vista operating systems.

- The CD-ROM will begin installation when inserted in the drive.

- Choose **SOFTWARE PROGRAM**, to begin the installation process of the software.
- If for some reason, the CD program does not start, please go to **START, RUN, BROWSE** (go to your cd-rom drive), and **SETUP**, to begin the installation process.
- A screen will appear with the message **Initializing Setup**. You will be asked where to install the program. The default is **c:\programs\MDAS-PRO**. If you wish to install the MDAS-PRO program on a different drive or in a different directory, type the drive and directory name.
- The installation program will now transfer files to your destination drive and directory.
- Following the installation of the program files, a Marathon program directory and two icons will be created: **MDAS-PRO Software** and the **Alarm Monitor**.

## Add Loggers



To start the software double-click on the software icon  or, go to **Start, Programs, MDAS-PRO**.

Click on the **EDL-WiFi** menu item and select **Admin, Add/Remove Logger**.

- Click on **Add** to create a new Logger definition. The “RF Logger Add” window will open.

RF Logger Add

Description: 0/22

Type

Device Server: Local

Add OK Add Server

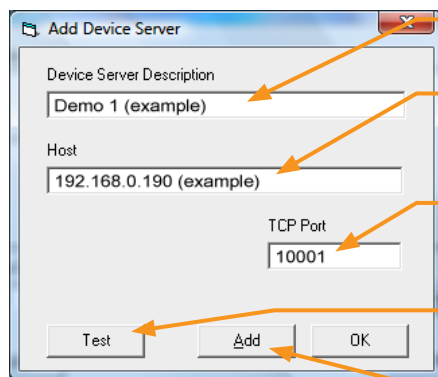
Add/Remove Loggers

Name	Address	Ch.	Device Server
4020 RF2	4020: 5		Local
4522 RF2	4522: 5		Local

Add Edit Delete OK

At this stage, leave settings as is and click on **Add Server**. (We will return to this window later.) the “Add Device Server” window will open.

## FILL IN:



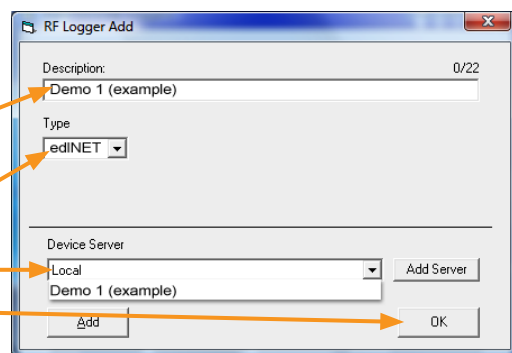
The "Add Device Server" dialog box contains the following fields and buttons:

- Device Server Description:** A text field containing "Demo 1 (example)".
- Host:** A text field containing "192.168.0.190 (example)".
- TCP Port:** A text field containing "10001".
- Buttons:** "Test", "Add", and "OK".

- Type a description of the EDL-WiFi logger (see example: "Demo 1").
- Under Host, put the address of the EDL-WiFi you wrote down earlier (example: "192.168.0.190").
- The TCP Port is the "Logger Port Address" you wrote down earlier (example: "10001").
- Click **Test** to test the connection for the server.
- Then click on **Add**. You will return to the "RF Logger Add" window.

## ENTER:

- A description of the EDL-WiFi logger (you can use the same description as the server).
- Select edlNet from the drop down list.
- Select the server you just entered in the previous step.
- Then click **OK**.



The "RF Logger Add" dialog box contains the following fields and buttons:

- Description:** A text field containing "Demo 1 (example)".
- Type:** A dropdown menu with "edlNET" selected.
- Device Server:** A dropdown menu with "Local" and "Demo 1 (example)" options.
- Buttons:** "Add", "Add Server", and "OK".

## Logger Initialization: To configure the logger



- In the MDAS-Pro menu bar click on **EDL-WiFi**.
- In the drop-down menu click on the **Logger** you just entered.
- Click on **Logger Initialization**.

The Logger Initialization screen allows you to set up your parameters for the edl-M5 and/or EDL-WiFi logger by using the four tabs: **Setup**, **Measurement**, **Alarms**, and **Properties**.

## SETUP TAB

- Description:** Enter alpha or numeric information, such as the location of the unit.
- Tracking Number:** Enter any numeric information. We recommend using the same number as the logger address.
- Logger Clock:** Set the time manually in the window provided or to set the logger-time based on the computer time as registered on your personal computer.
- Battery Status:** The EDL-WiFi logger comes with two sets of batteries: one set powers the module and the other one powers the logger. The percentage bar in this section displays the estimated battery life based on the date when the logger battery was first installed or replaced.

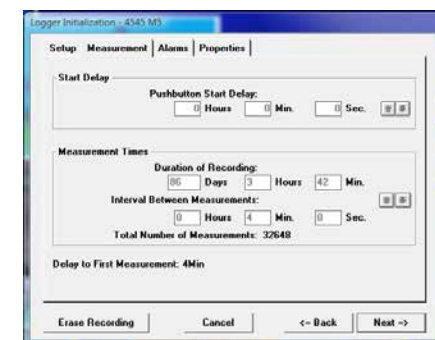


The "Logger Initialization - Setup" tab shows the following fields and buttons:

- Description of Recording:** A text field containing "King Soopers Meat Plant".
- Tracking Number:** A text field containing "4545".
- Logger Clock:** A section with "3/20/2009" and "3:21:28 am" fields, and a "Set Logger Clock To Computer Time" button.
- Battery Status:** A section with "Battery was installed on 1/27/2009" and a "94%" battery level indicator.
- Buttons:** "Erase Recording", "Cancel", "< Back", and "Next >".

## MEASUREMENT TAB

- Start Delay:** Set a time delay in hours, minutes, or seconds before the EDL-WiFi will begin to record.
  - Measurement Times:** Set the length of time in days or hours that you wish to record data. Please note that the "Duration of Recording" and "Interval Between Measurements" are dynamically linked. Setting the "Duration of Recording" will automatically calculate the "Interval Between Measurements". Conversely, setting the "Interval Between Measurements", will automatically calculate the "Duration of Recording".
- For example**, for a 32K model, if you set the "Duration of Recording" to 365 Days, it will automatically calculate the "Interval Between Measurements" as 16 minutes and 58 seconds. Or, if you set the "Interval Between Measurements" at 10 minutes, it will automatically calculate the "Duration of Recording" to 215 days and 9 hours.



The "Logger Initialization - Measurement" tab shows the following fields and buttons:

- Start Delay:** A section with "Pushbutton Start Delay:" and fields for "0" Hours, "0" Min, and "0" Sec.
- Measurement Times:** A section with "Duration of Recording:" (06 Days, 3 Hours, 42 Min) and "Interval Between Measurements:" (0 Hours, 4 Min, 0 Sec).
- Total Number of Measurements:** A text field containing "32648".
- Buttons:** "Erase Recording", "Cancel", "< Back", and "Next >".

## ALARMS

- **Temperature Greater Than:** Allows you to set the maximum temperature for an alarm condition to be triggered.
- **Temperature Less Than:** Allows you to set the minimum temperature for an alarm condition to be triggered.
- **Alarm Time:** Alarm conditions are checked when measurements are made. If measurements are made every 5 minutes, then the valid intervals for the Alarm conditions are 0, 5, 10, 15, ... etc. A zero time is interpreted as a single measurement. In this example, five minutes would require two measurements outside the alarm limits to cause an alarm condition.



The loggers support two different methods of measuring the time for an alarm condition. The default method is “Cumulative Time”. The total time beyond the limit is counted. The alarm limits may be exceeded only once or several times as the total time is added together. The second method is called “Continuous Interval”. The alarm will activate only when the alarm limit has exceed the full time specified. If the temperature returns to the acceptable range the time count will be reset.

## ADVANCED ALARM MODES (NOTIFICATION):

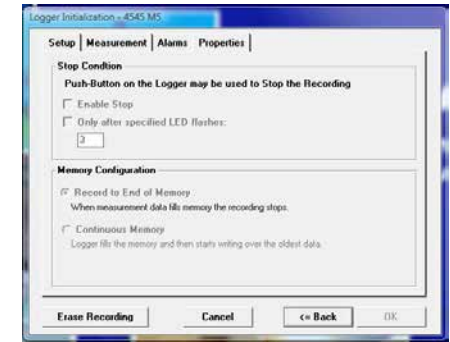
- **Single Alarm Notification:** with “Single Alarm Notification” the logger must be reinitialized to reset the alarm. This option allows you to set alarm time.
- **Manual Reset:** With “manual reset” you can reset the alarm by pressing the Start button. This option allows you to set alarm time.
- **Temperature Notification:** With “Temperature Notification” the EDL-WiFi will send an email every time the temperature reaches the alarm limit, in other words, it resets itself. You cannot set an alarm time with this option. You can control the frequency of the emails from Admin/ Alarm Setting/ Time between email notifications.

## PROPERTIES

- **Stop Condition:** The Push Start button on the EDL-WiFi logger may be enabled as a “Stop” button mechanism. This option is not recommended if you are using the manual alarm reset notification.
- **Memory Configuration:** The default is Record to End of Memory.

**Note:** The recording can also be stopped by using the remote stop from the software.

- When you are finished entering your settings click **OK**.



## You are now ready to begin recording.

- Simply manually press the Start button or click on remote start from the software, EDL-WiFi\_(logger description)\_Start\_Recording\_Now.
- The green LED indicator light will blink three times in succession.





## Screenshots:



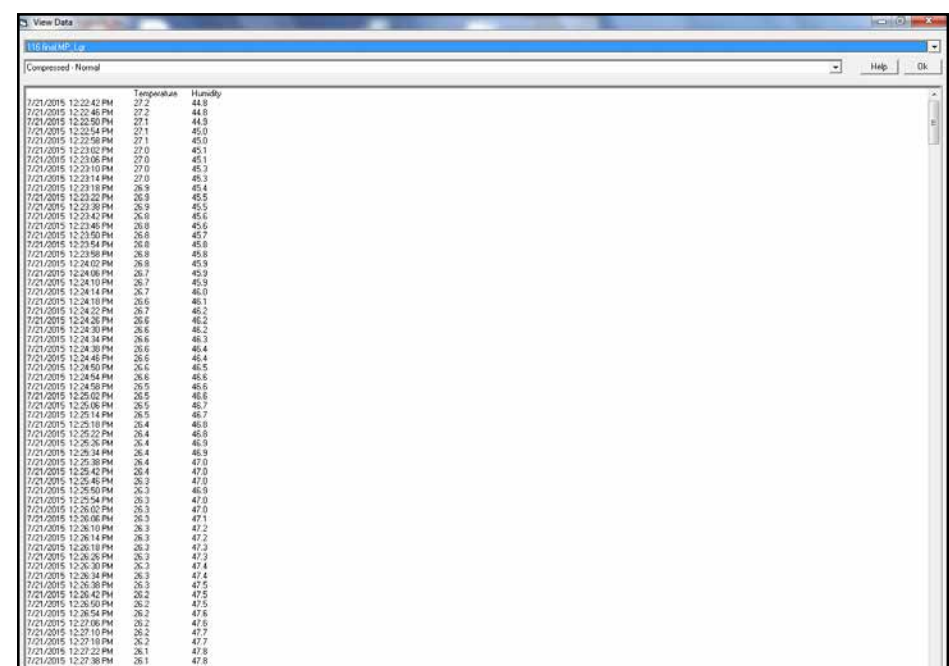
1) Splash Screen



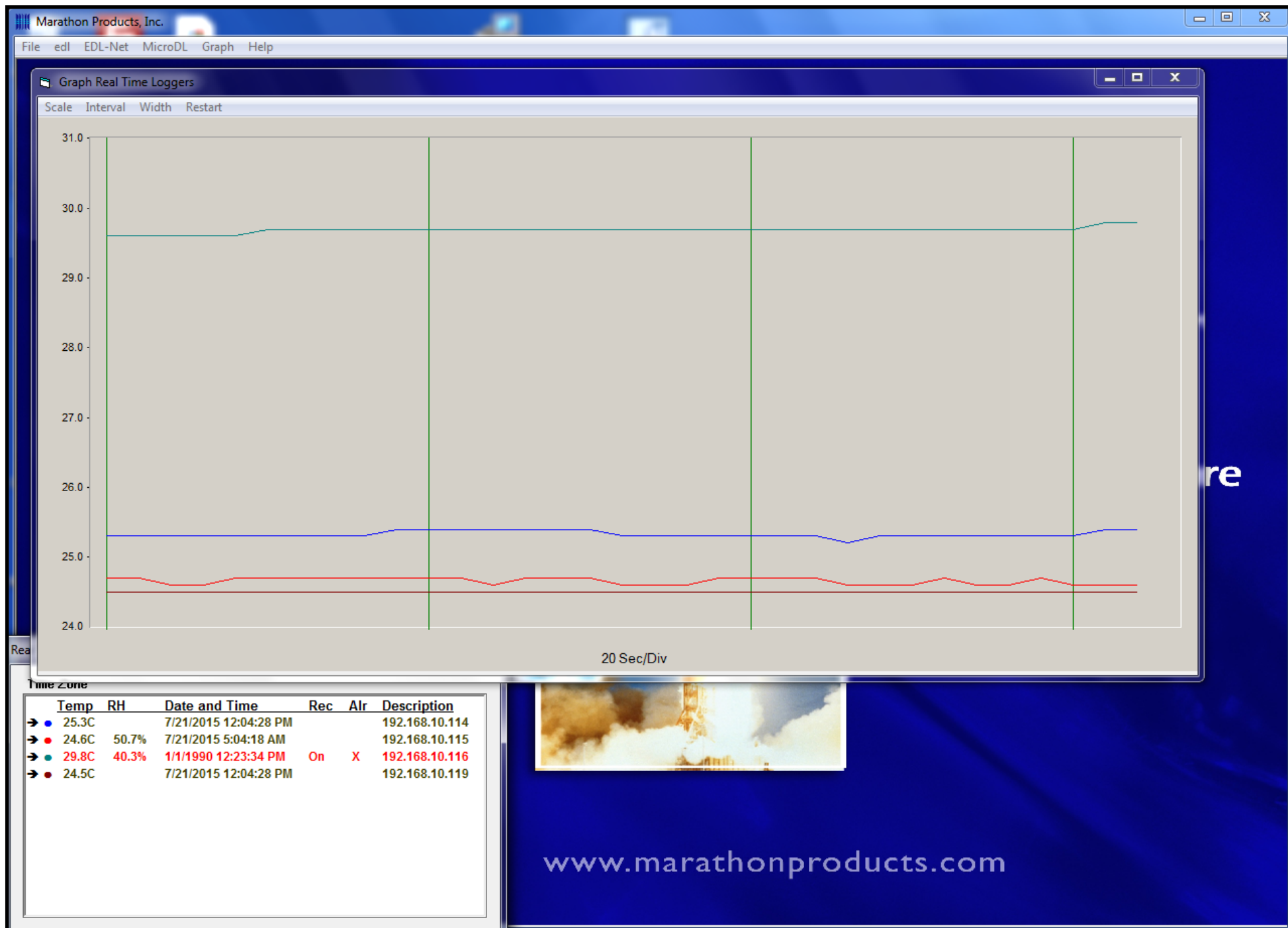
3) Real-time MDAS.



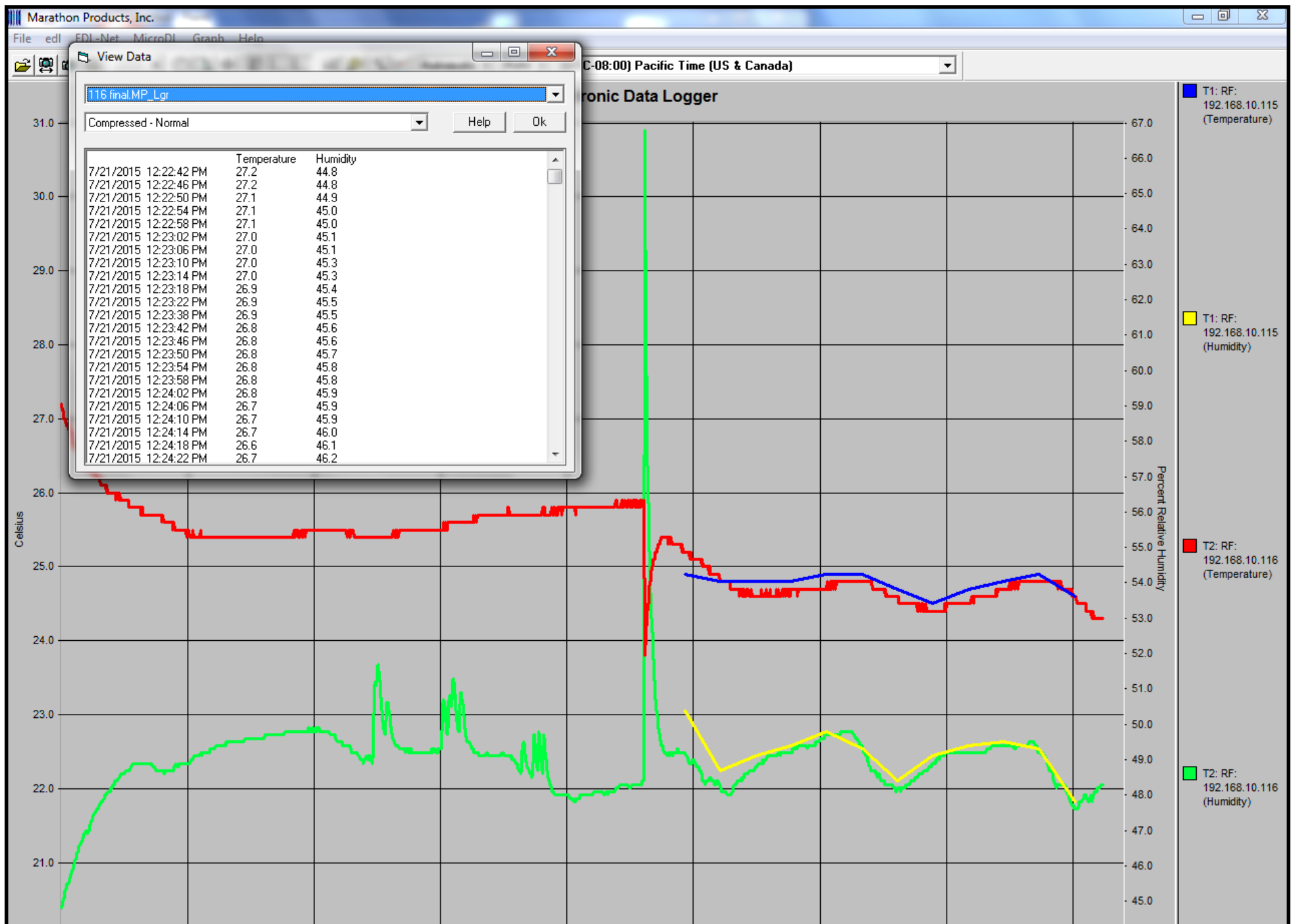
2) Logger General Information.



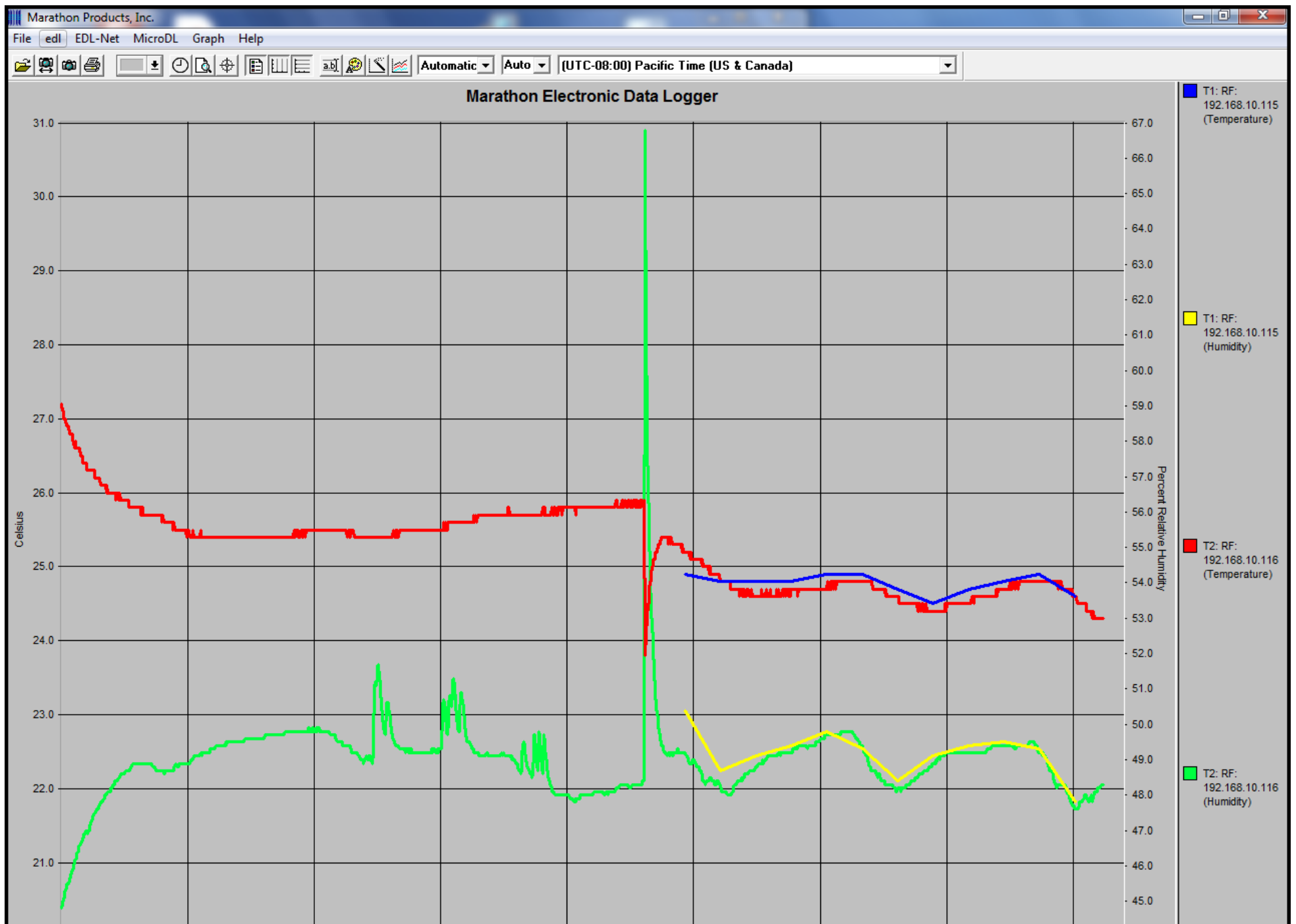
4) Data



5) Graph plus Real-Time MDAS



6) View Data with Graph.



7) Multi-trace Graph with Gridlines.