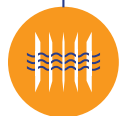


MARATHON PRODUCTS, INC.



Maxi-Thermal Software

Works with c\temp-USB, 2c\temp-USB, 2c\temp-RH, EDL-USB, EDL-RTD2, EDL-LN2, 2c\temp-LCD and MaxiLog.

You need to **“Run As Administrator”** when you install the MaxiThermal Software. There are 2 programs on the software CD that need to be installed:

MaxiThermal Software and GPSSocketUSBservice

Make sure that you have installed both programs before running MaxiThermal.

Understanding the Menu Bar



Open
Save As
Export
Print Preview

Logger Initialization
Read Logger

Change Color
Vertical Grid
Horizontal Grid
Edit Text

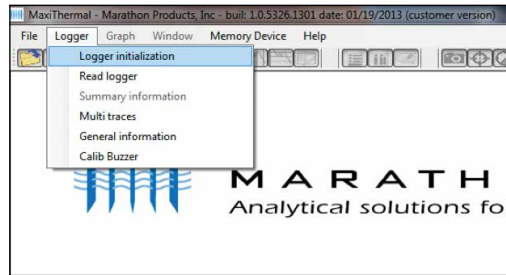
Summary Information
View Data
Edit Comment

Copy to Clipboard
Show Value
Elapsed Time
Celsius / Fahrenheit

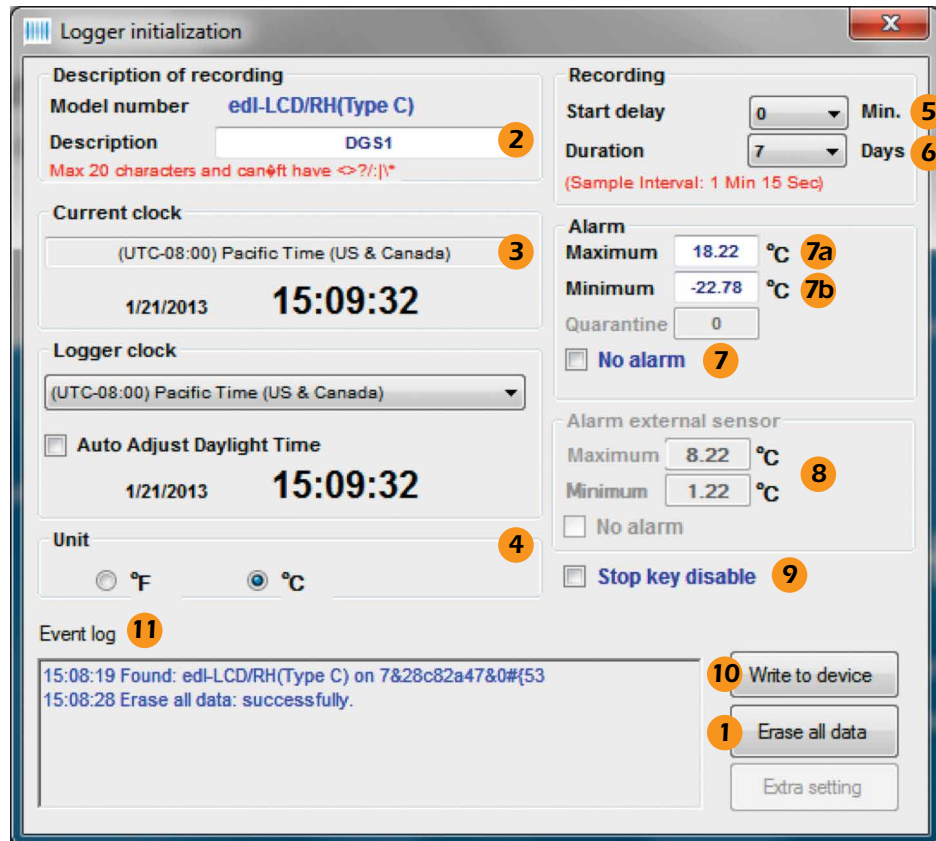
Programming The Logger

Begin by starting the MaxiThermal software, connect the USB cable, then connect the Marathon data logger.

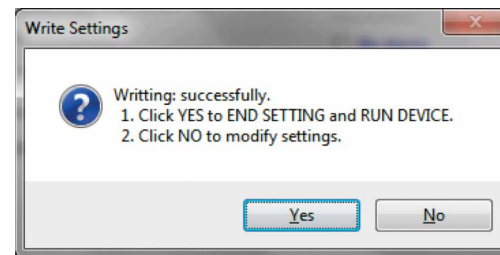
On the menu bar select **Logger / Logger Initialization** in the drop-down menu. The Logger Initialization Window will open.



1. If there is data in the logger, Click the **Erase all Data** button. The **Event Log 11** will update that the data has been erased.
2. For **Description**, enter a Descriptive name for the recording.
3. For **Current Clock**, select the Time Zone for the logger clock.
4. For Unit, select temperature scale, °F = Fahrenheit or °C = Celsius.
5. Select a **Start Delay** time if you want to pause before starting to record.

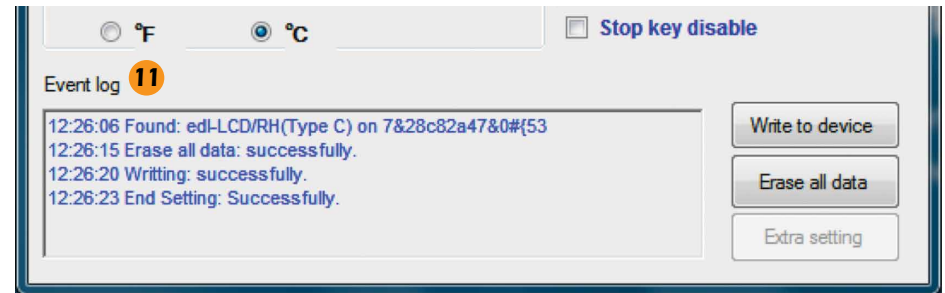


6. Select the **Duration** of recording time. The Sampling Interval will be automatically calculated.
7. Select **No Alarm**.
 - a. Or if you want a High Alarm, enter the temperature for the **Maximum**.
 - b. If you want a Low Alarm, enter the temperature for the **Minimum**.
8. For loggers with dual sensors (edi-LN2 and edi-RTD2), enter the **Maximum** and **Minimum** Alarm values for the external sensor.
9. Select **Stop Key Disable** if you want the logger to stop while recording by pressing the Start button.
10. Click **Write to Device** to write the new configuration to the logger.



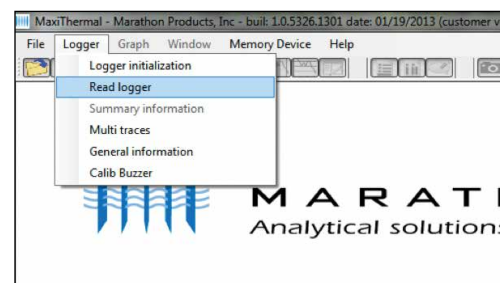
Click **Yes** to confirm you want to write the new configuration to the logger.

The **Event Log 11** will update with Write successful and End Settings successful.



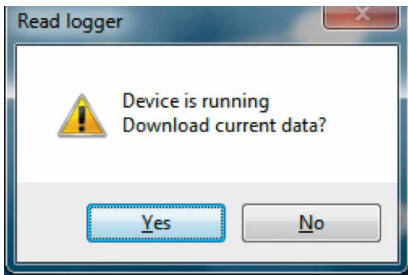
The logger is ready to run. To start recording, press and hold the **START** button on the unit until the green light flashes.

Reading The Logger



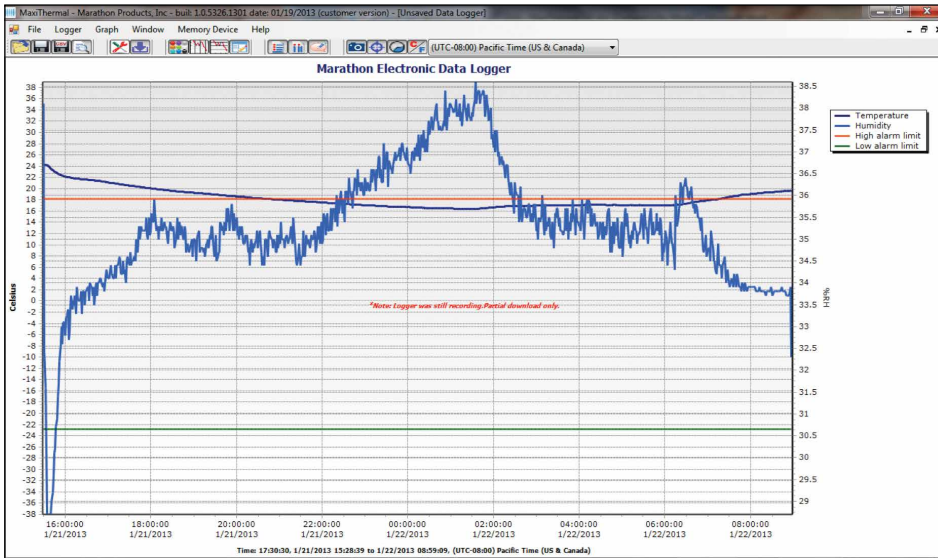
Begin by starting the MaxiThermal software, connect the USB cable, then connect the Marathon data logger.

■ On the menu bar select **Logger / Read Logger** in the drop-down menu.



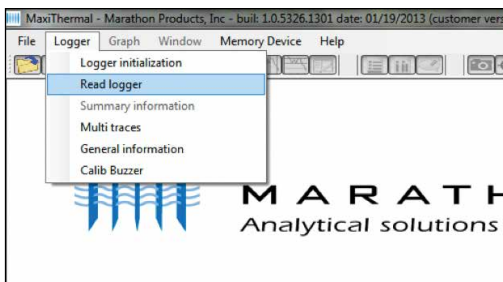
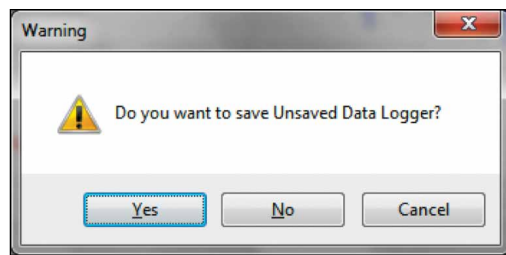
If the logger is recording you will be notified and asked if you want to continue, click **Yes**.

MaxiThermal software will read and plot the logger's data.



This plot is for the 2ctemp-RH logger which records temperature and relative humidity. Similar plots would be generated for 2ctemp-USB, edI-LN2 and edI-RTD2.

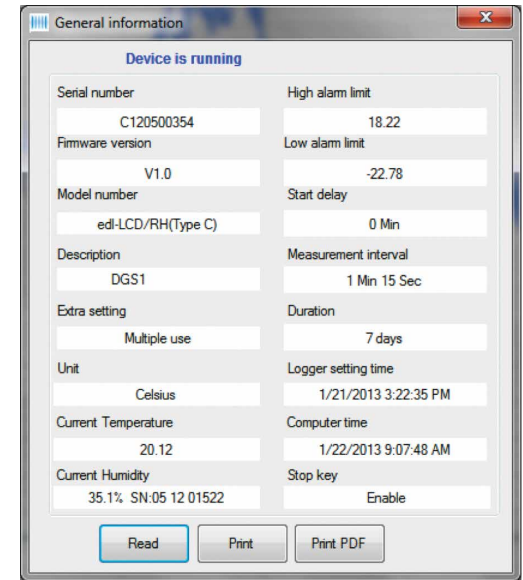
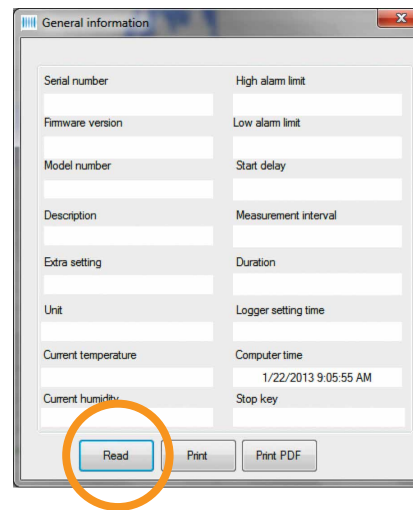
When you close the plot a warning window will open which asks if you want to save the data. Click **Yes**, **No** or **Cancel**.



Creating Reports

GENERAL INFORMATION

On the menu bar select **Logger / General Information** in the drop-down menu.



The General Information window will open. Click **Read**.

The software will read the logger's information and fill in the fields.

SUMMARY INFORMATION

On the menu bar select **Logger / Summary Information** in the drop-down menu.

The Summary Information window will open where you can scroll through the logger information.

